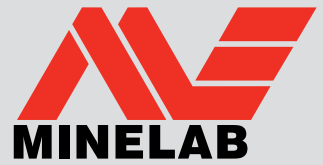


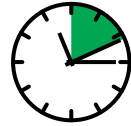
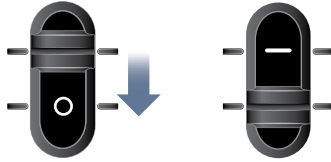
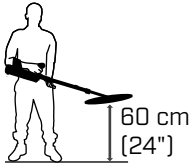
# Field Guide

## F3 UXO Detector



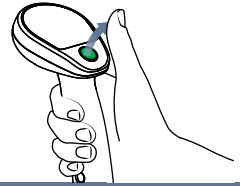
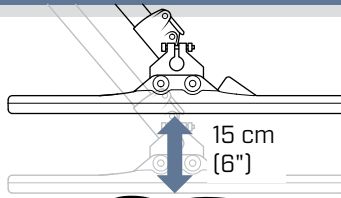
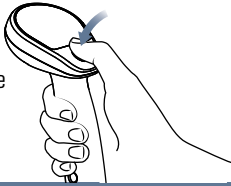
### Operation

**1.**  
Switch On

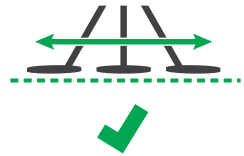
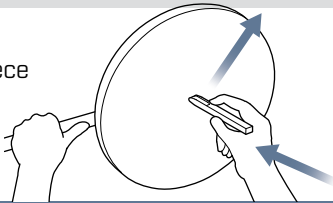


12 seconds

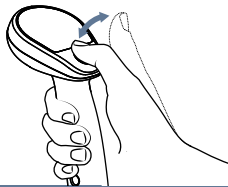
**2.**  
Ground  
Balance



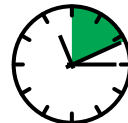
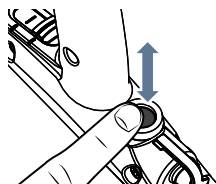
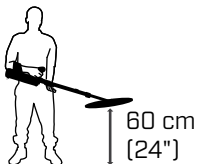
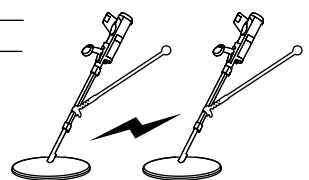
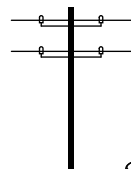
**3.**  
Test Piece



**4.**  
Audio Reset

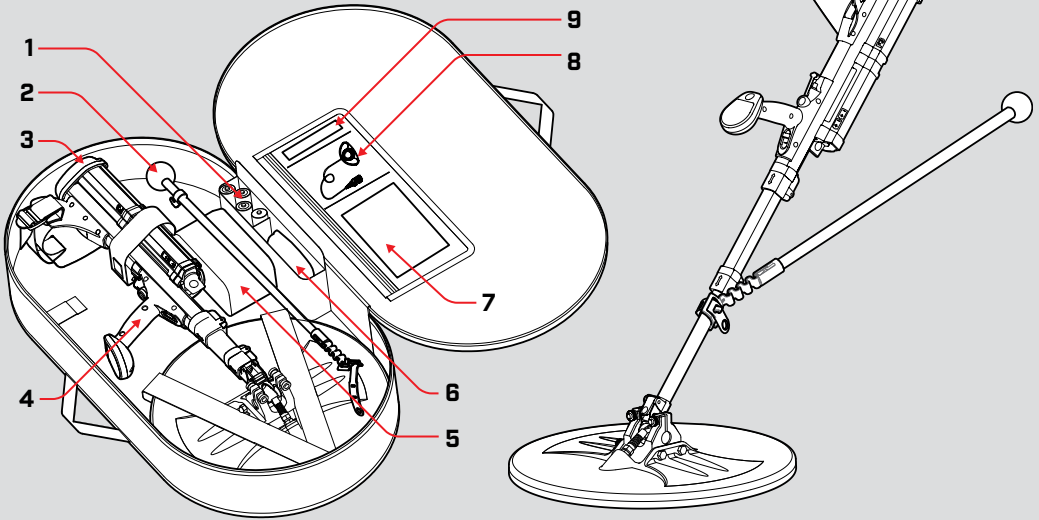


**5.**  
Noise Cancel



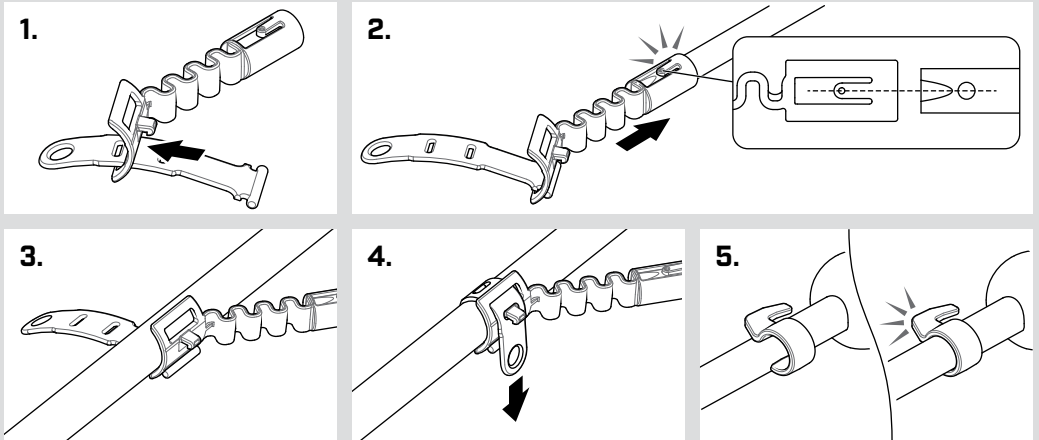
45 seconds

# F3 UXO Configuration



- |  |   |
|--|---|
| 1. Batteries 4 × D Cell                            | 6. Red Endcap (Yellow Endcap Optional)                      |
| 2. Guide Arm                                       | 7. Field Guide, Interchange Procedure and Operations Manual |
| 3. Black Endcap (Default)                          | 8. Earset   |
| 4. F3 UXO Detector                                 | 9. Test Piece   |
| 5. Battery Pack Bag and Extension Cable (Optional) |   |

## Guide Arm Assembly



## F3 Endcap Guide



**Black**  
High Sensitivity  
(Default Endcap)



**Red**  
Reduced Sensitivity



**Yellow**  
Detector Settings Customisable  
Via PC